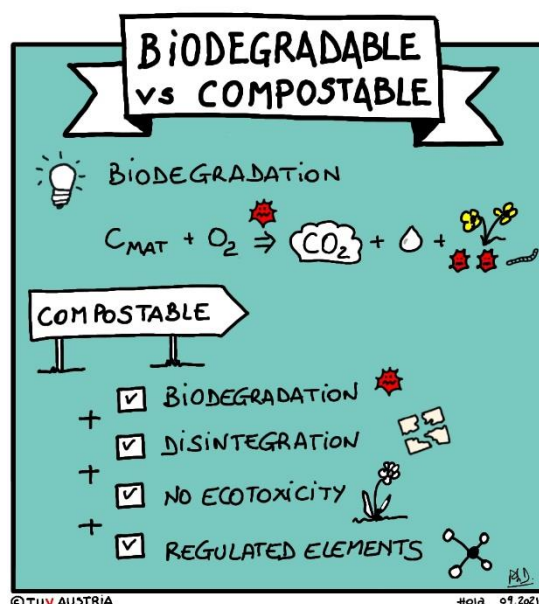


# 01 – biodegradable vs compostable



A material can be claimed to be **biodegradable** if it is transformed into CO<sub>2</sub>, water and biomass by micro-organisms within a defined period of time under certain temperature and environmental conditions (compost/soil/water).

A finished product is considered **compostable** if, when made of biodegradable materials, it disintegrates within a specified time in that environment without ecotoxic effects on it.

It is understood that the ability of a product to disintegrate within the prescribed time depends on its shape (thickness) and the temperature of the compost (cold/domestic or hot/industrial)..